

**LEAP
SME**

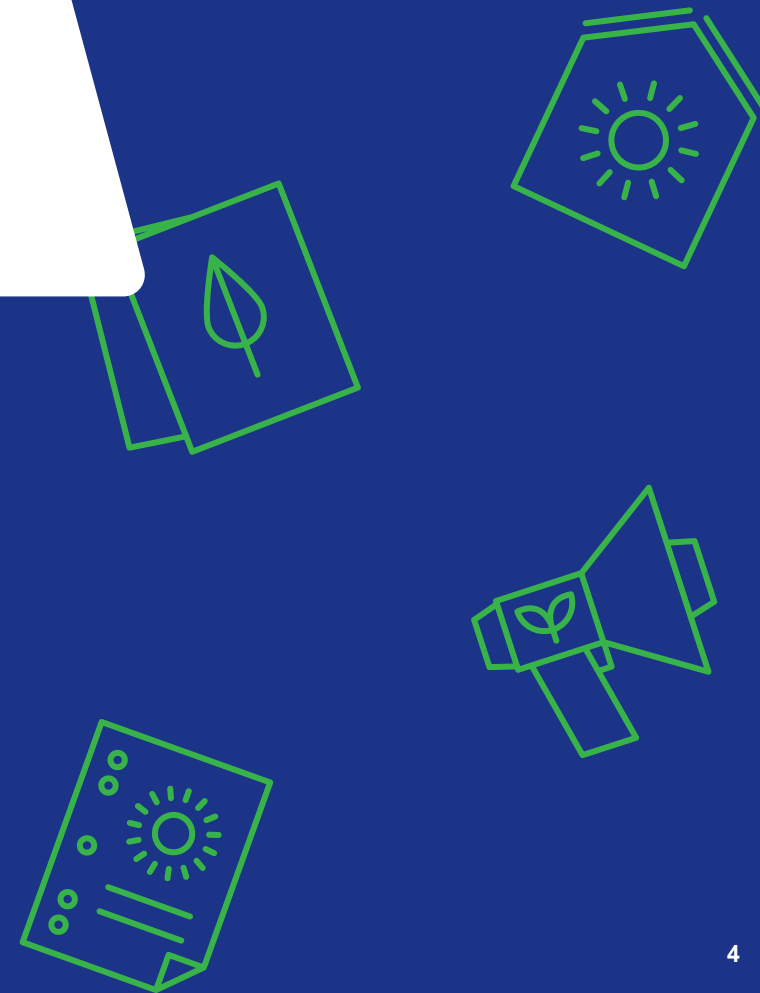


ENERGY AUDIT POLICIES
TO DRIVE ENERGY
EFFICIENCY

The European experience, the policy landscape and common barriers



This project has received funding from the EU
H2020 research and innovation programme
under grant agreement No 893924



LEAP4SME: energy audit policies to drive energy efficiency

Aim

Understand how to improve policies and programmes that are put in place to get small and medium sized businesses to do energy audits and implement the recommended energy-saving measures.

10 project partners

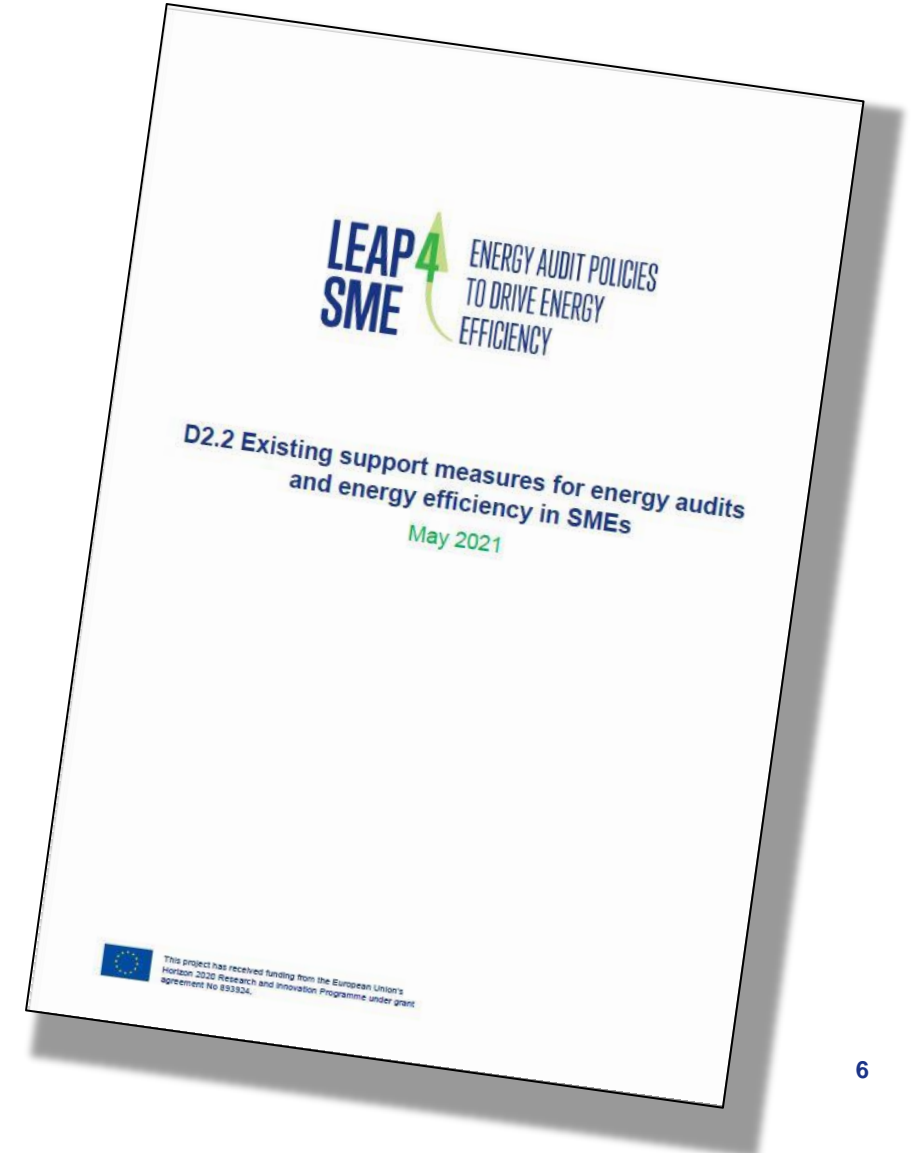
9 National Energy Agencies

Austria
Croatia
Greece
Italy
Malta
Poland
Portugal
Slovakia
UK



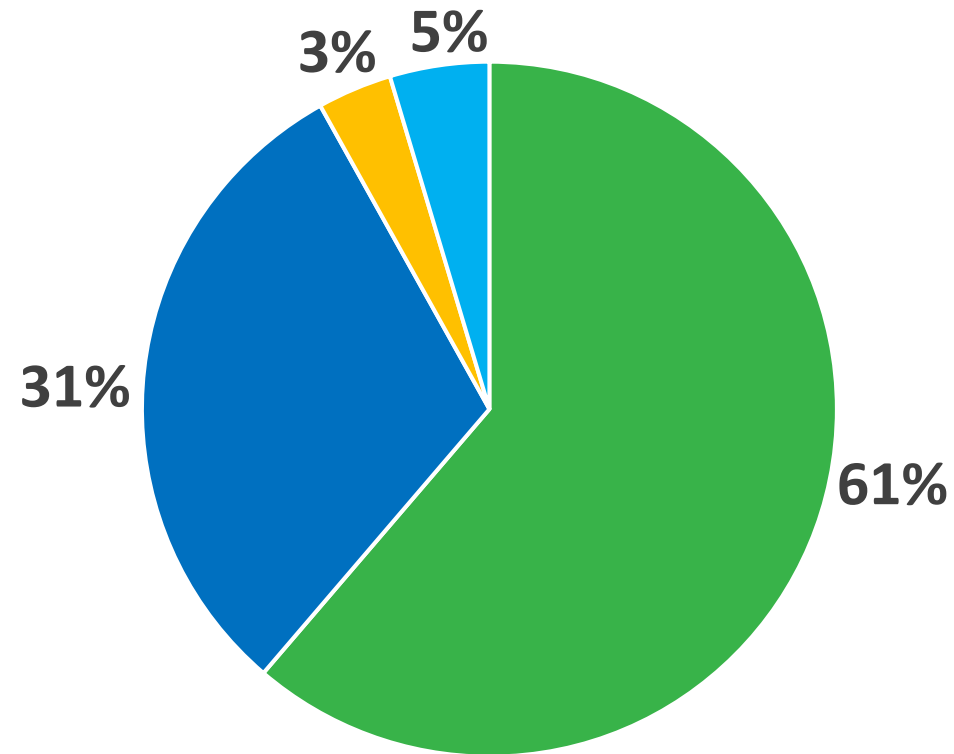
Existing support measures for SMEs

- Report published in May 2021
- Overview of policies and programmes in place to support SMEs



Existing support measures for SMEs

- 173 support programmes and policies were identified



■ Financial support ■ Information/advice ■ Regulation ■ National plan/strategy

Which policies and programmes were most successful?

- Integrated programmes
- Long term support programmes
- Targeted at specific sectors
- Reduced complexity
- Effective communications and engagement

Energy audits market and main barriers

- Report published in July 2021
- An analysis of the energy audits market and the main barriers SMEs face
- Literature review, workshops and interviews with European energy agencies and experts



Main findings and barriers

- The SME energy audit market is less standardised
- Most common barriers are:
 - Financial
 - Organisational
 - The way support programmes are designed

Difference in impact according to SME size

| Barriers | Size of SME | | |
|---|--|--|--|
| | Micro | Small | Medium |
| Access to finance | Challenging – providing guarantee for accessing credit e.g., microloans | Moderately challenging | Not challenging – more likely to have financial reserves. Internal departments that manage business finances |
| Energy consumption data | Moderately challenging – usually simple energy consumption data / locally accessed | Moderately challenging – may not receive metered consumption | Challenging – more complex organisational consumption |
| Lack of resource (finance, time, expertise) | Challenging | Challenging | Moderately challenging |
| Energy efficiency opportunities | Challenging | Challenging | Moderately challenging |

LEAP SME



ENERGY AUDIT POLICIES TO DRIVE ENERGY EFFICIENCY

Thank you



This project has received funding from the EU H2020 research and innovation programme under grant agreement No 893924. This document reflects only the authors' views. The European Commission is not responsible for any use that may be made of the information it contains.

