

**LEAP  
SME**



ENERGY AUDIT POLICIES  
TO DRIVE ENERGY  
EFFICIENCY

# SMEs and energy efficiency in Slovakia

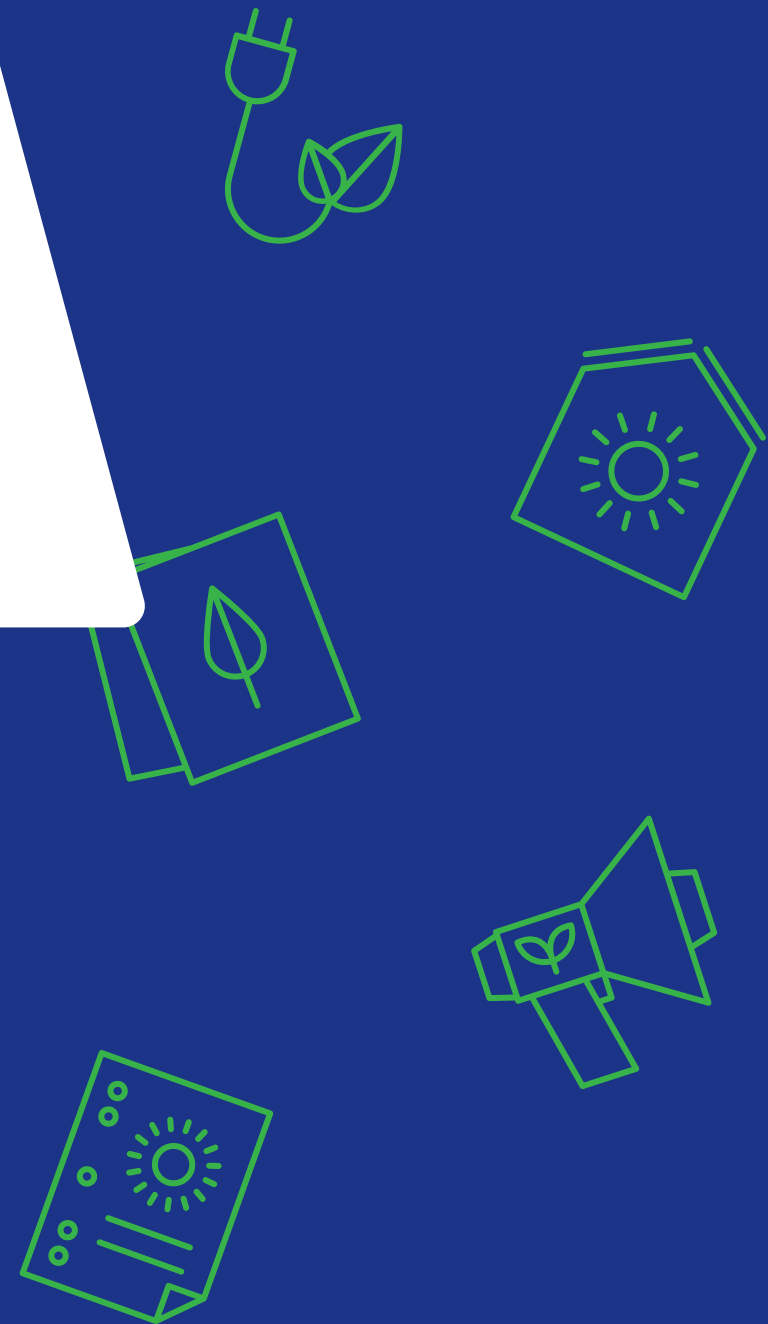
Stanislav Laktiš

Slovak Innovation and Energy Agency



This project has received funding from the EU  
H2020 research and innovation programme  
under grant agreement No 893924

**SIEA**  
SLOVAK INNOVATION  
AND ENERGY AGENCY



# SMEs in Slovakia

SMEs are **99,9% of all** enterprises,

Employ more than **70 %** of people, and creates more than **50% of added value in economy**

**Act on energy efficiency** (non-mandatory EA for SMEs)

**NECP 2021 - 2030**  
(support for EA in SMEs, estimated saving 2,9 GWh annually)

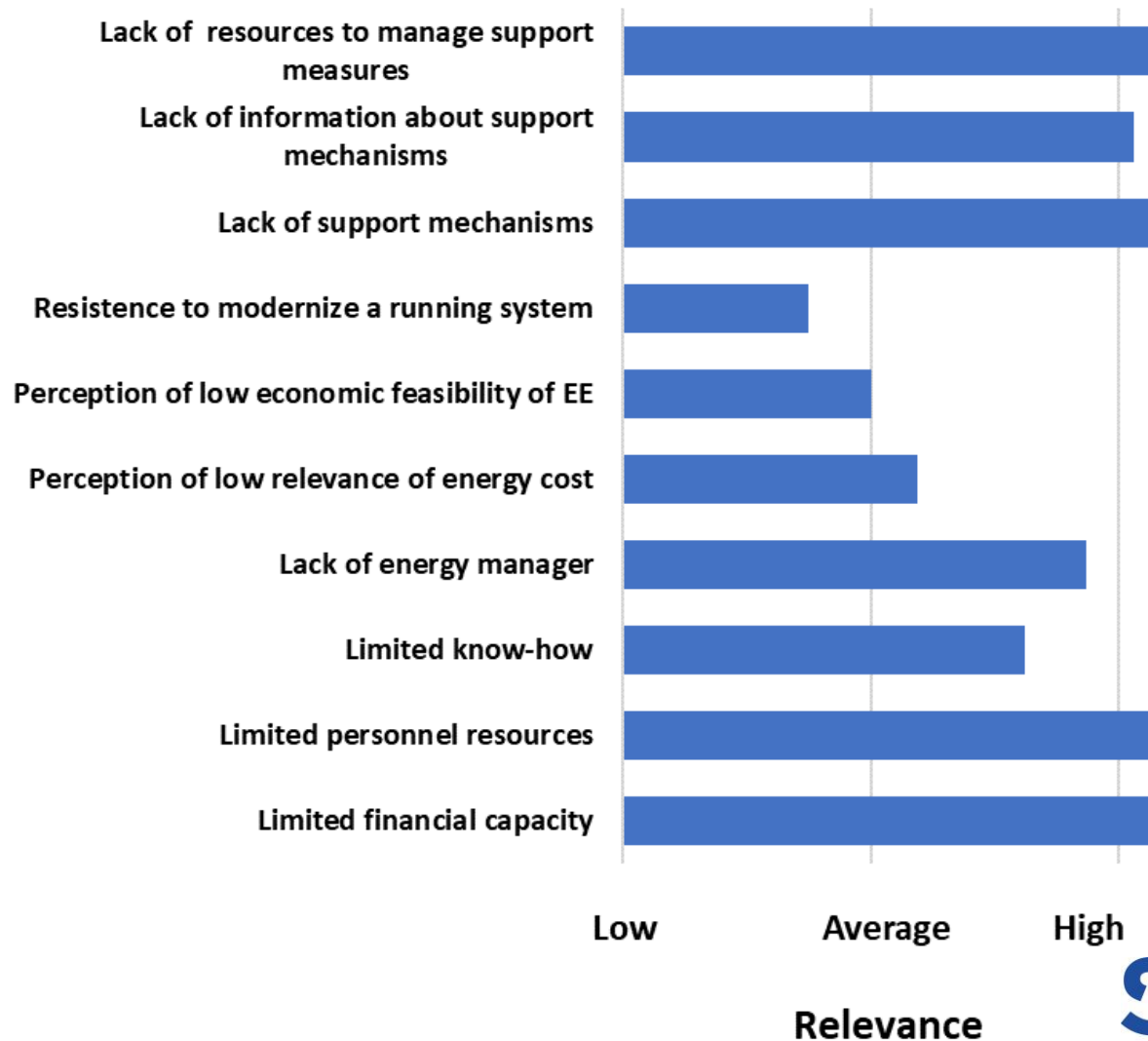
**Lack of policies** concerning EE in SMEs

**Monitoring system of Energy efficiency** (EE data, EA data), significant changes in next years (RCSE)

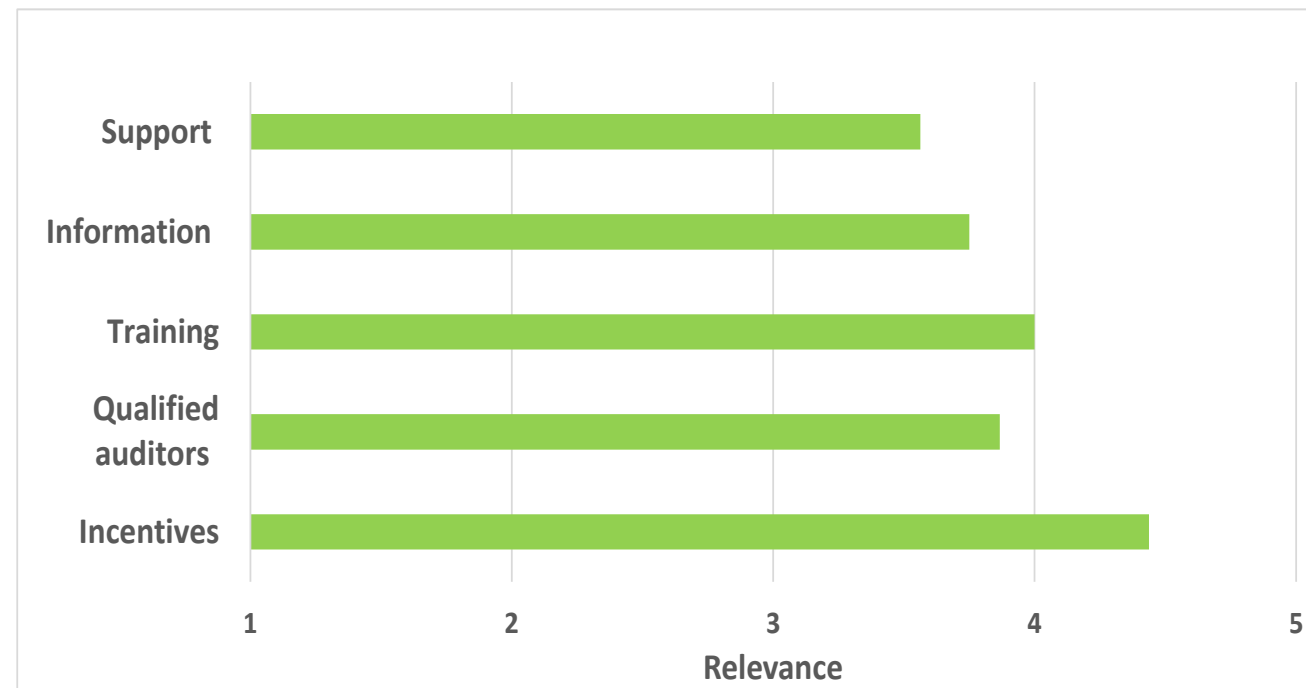
Estimated energy consumption of SMEs **10% – 13% of GIC**

**Savings potential 15% - 18%** (after implementation of recommended measures from EAs)

# Energy Audits barriers most relevant for SMEs

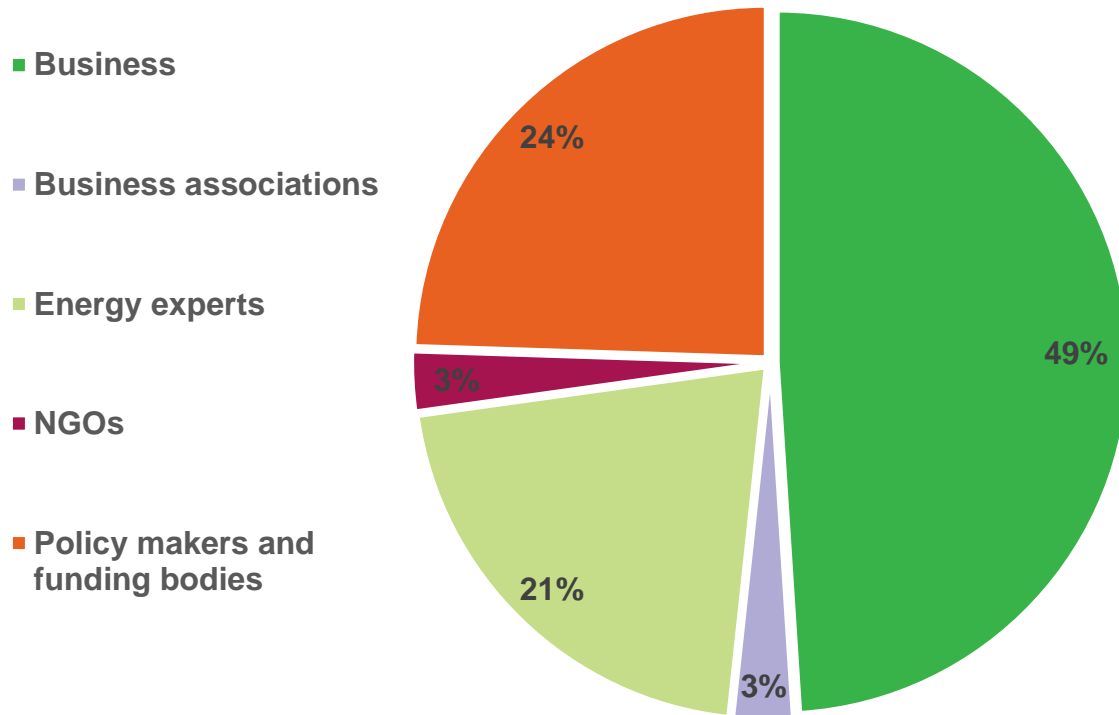


# Energy Audits needs most relevant for SMEs



# SME Observatories in Slovakia

Type of participants (131)



## Recommendations from participants

- **Awareness**
- **Tailoring**
- **Financial constraints**
- **Skills**
- **Monitoring**
- **Energy Audit quality**

**LEAP  
SME**



ENERGY AUDIT POLICIES  
TO DRIVE ENERGY  
EFFICIENCY

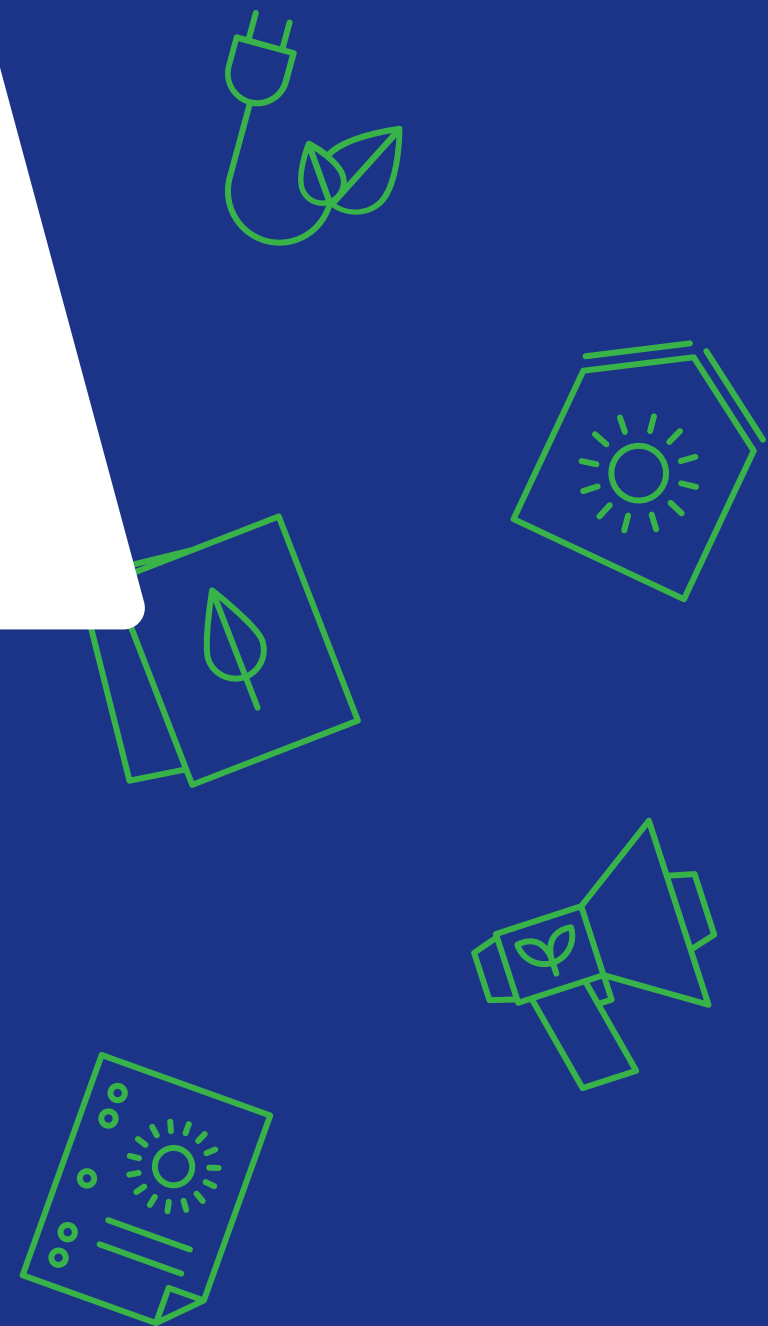
# SMEs and energy efficiency in Croatia

Vedran Krstulović

EIHP – Energy Institute Hrvoje Požar



This project has received funding from the EU  
H2020 research and innovation programme  
under grant agreement No 893924



# Principal regulatory/institutional support for EE in SMEs

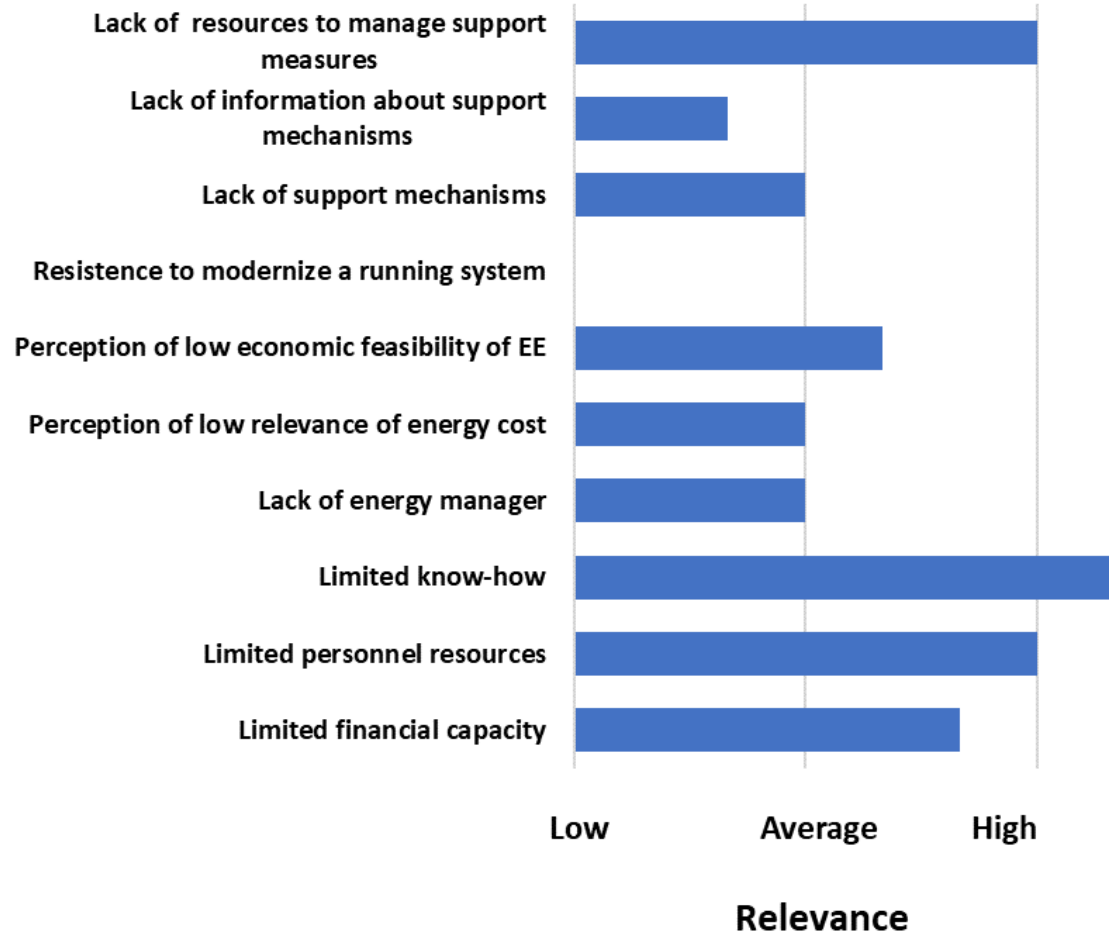
The Environmental Protection and Energy Efficiency Fund is financing (not continuously) energy audits and energy renovations/improving mostly households, state/city owned buildings, but rarely private companies

Counties or cities sometimes have tender for co-financing EE and RES projects , but not stricly for SMEs

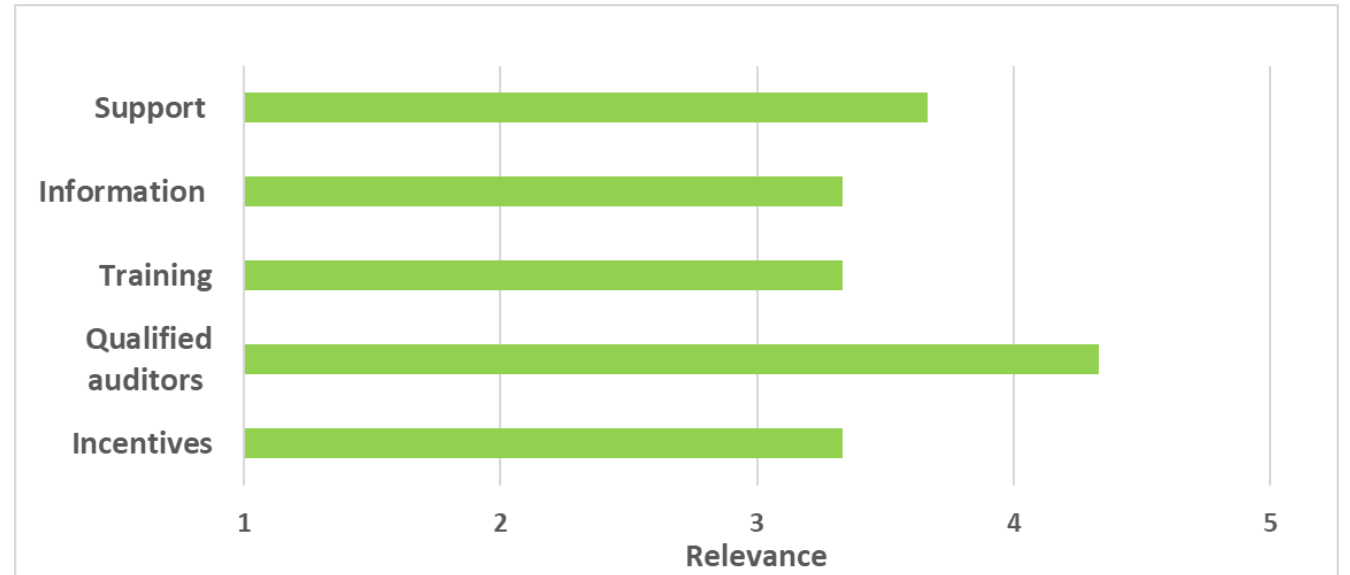
# Sources for energy consumption in SMEs

- from National Agency for Statistics - data about energy consumption for each company, only from the industry sector (3.000 companies), but not structured by company size
- on NACE level for industry
- for the service sector, there are only estimations based on surveys
- large enterprises (in 2018 total 360) are obliged every four years to carry out energy audits - since 2017.; those who have ISO 50001 certificate not obliged

# Energy Audits barriers most relevant for SMEs



# Requirements for Energy Audits most relevant for SMEs





# Main challenges for EA/EE development at SMEs

- The role of energy audits
- the nature of EA for SMEs – mandatory or not?
- the nature of EA – market maturity vs. institutionally imposed
- financing options for EE projects – FI, calls for financing
- the quality of prepared projects
- auditors and certification scheme
- technical complexity of EE projects for industry (compared with other sectors)



EUROPEAN  
**COVENANT  
OF COMPANIES**  
FOR CLIMATE AND ENERGY

# Supporting SMEs in their decarbonisation journey

Vilte Kaminskaite, Deputy Project Coordinator

CCCE Secretariat

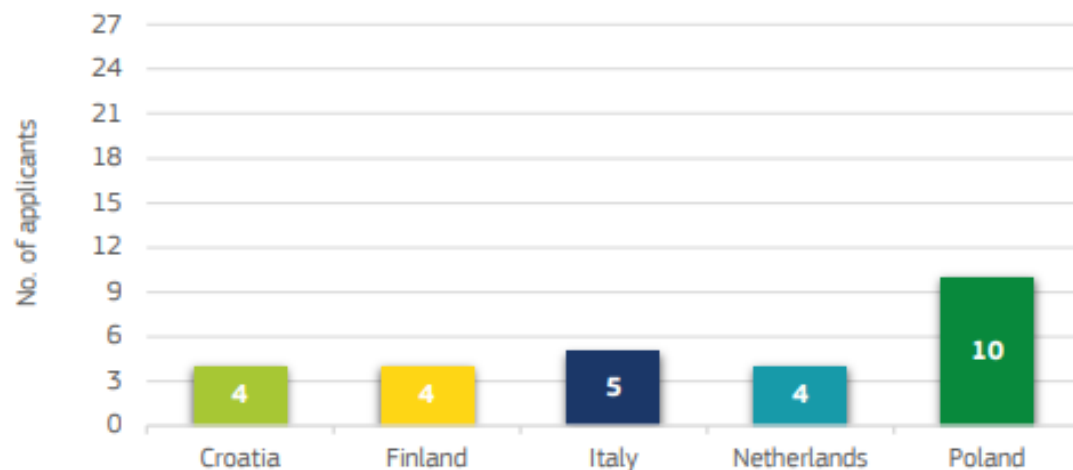


# Advisory services/Technical Assistance

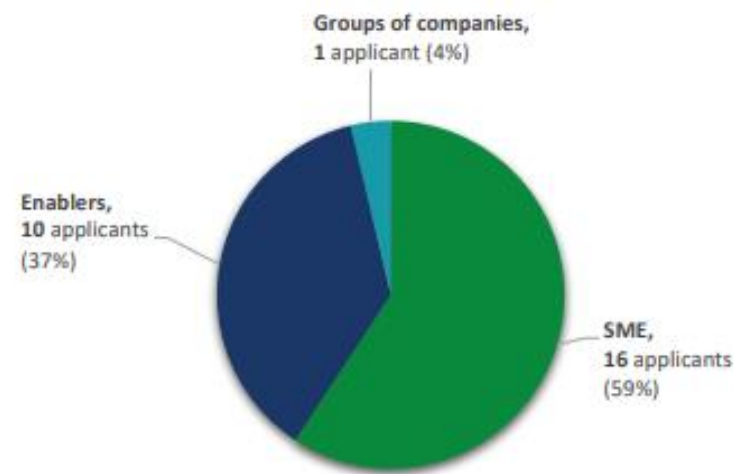
- CCCE team of experts provides **practical and tailored, free of charge** advisory services to European companies to help them decarbonise.
- Two calls for technical assistance are organised:
  - the first call - June 2022 – April 2023
  - the second - May 2023 – December 2023
- Process is organised in the following steps:
  1. Application
  2. Selection of applicants
  3. Onboarding interviews
  4. Data collection
  5. Contracting
  6. Implementation
  7. Exit interviews and feedback
- Guidance documents and other useful [resources](#) available online (such as Country overviews of support measures and financing tools), but also peer-to-peer learning and masterclasses.

# Applicants in the first call

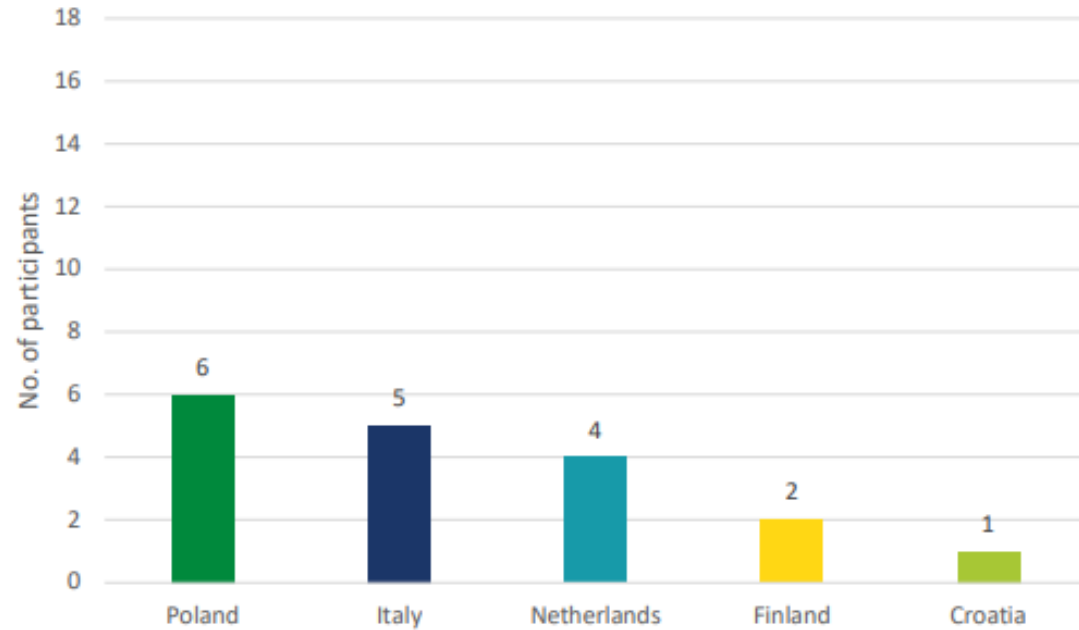
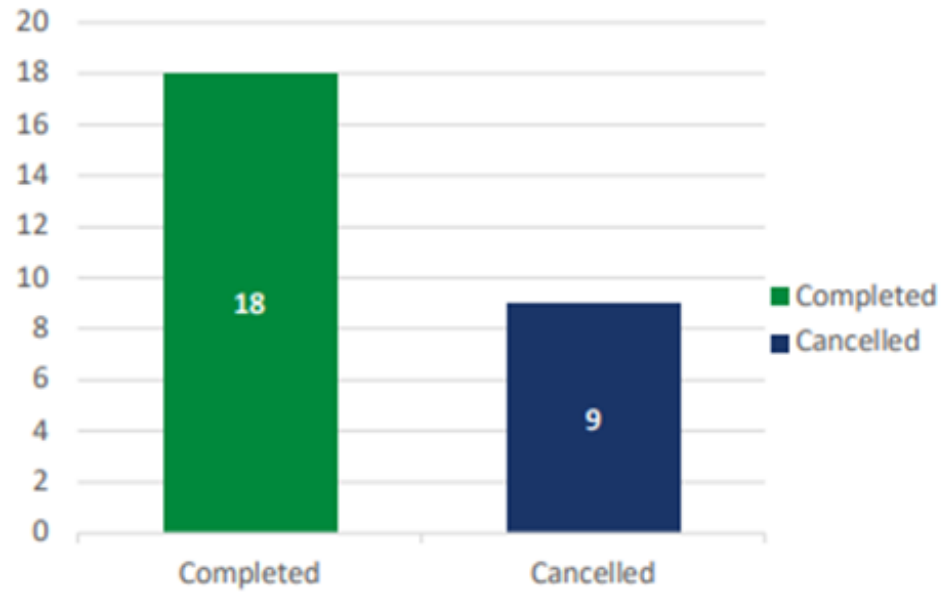
## Number of applicants per country



## Type of applicants



# Number of participating companies



# Technical assistance provided

Services selected	No. of applicants				
	HR	Fi	IT	NL	PL
Assessing technologies appropriate for the applicant	x	<b>1</b>	x	x	x
Assist in the selection of support schemes for SMEs and in their implementation	x	x	x	x	<b>1</b>
Communication and engagement support to gain acceptance among employees, the board, or other companies in the neighbourhood or part of the supply chain or local municipalities	x	x	X	<b>1</b>	X
Energy Audit Assistance	x	x	<b>1</b>	<b>2</b>	<b>2</b>
Evaluation of an existing plan/roadmap of a set of measures	x	x	X	x	x
Identification of challenges and weaknesses in investment proposals on energy efficiency and clean energy	x	x	<b>1</b>	x	x
In order to facilitate our members, we want to develop a platform with practical information on how to become emission-free. We also would like to clarify how the ambitions and the timeline of the Race To Zero could be incorporated into the SSK criteria.	x	x	x	<b>1</b>	x
Investment support - connecting to other initiatives, funding and financing mechanisms	<b>1</b>	X	<b>1</b>	x	x
Plan on how to implement energy efficiency RES or achieve climate neutrality	x	<b>1</b>	x	x	<b>1</b>
Review of existing practices in supporting SMEs	x	X	<b>1</b>	x	<b>1</b>
Support in the development of a research and innovation project with potential linking to knowledge institutes and innovative companies	x	x	<b>1</b>	x	<b>1</b>

5 days to be provided



3 days to be provided

## Lessons learnt from the 1<sup>st</sup> call

- No. 1 barrier – **language**, therefore support in **national language** is highly appreciated.
- Most applicants – **micro and small companies**.
- Most interest from countries with **fewer support schemes**.
- **Communication** can be challenging due to limited resources/availability.
- Significant amount of time to establish **precise scope** of the support needed and the support has to be **bespoke**.
- Process needs to be **flexible** (e.g. initial deadlines had to be extended) but it is important to make it **clear**.
- **Local** connections are critical.

# Pledging, refined support & Partner network

- **Pledging** scheme introduced (companies more likely to take action if committed publicly) – 4 levels (Entry, Bronze, Silver and Gold).
- Technical assistance **process aligned** with pledging scheme. Pledges and applications to be assessed on **a rolling basis** (as soon as possible).
- Technical assistance accessible to applicants from **all EU member states**, and support offered in more **languages** (Dutch, French, German, English and to some extent in Bulgarian, Lithuanian, Romanian, and Spanish).
- The list of technical assistance services unchanged, but **masterclasses** and other types of support further to be added to broaden the **reach**, including **Country overviews of available support measures and financing tools for all EU MSs**.
- The role of **Partner network strengthened** – to support **the outreach** and access local, regional, national and European **networks**, but also **expand** the offer of **support services** and establish **permanent cooperation** channels.





# EUROPEAN **COVENANT OF COMPANIES** FOR CLIMATE AND ENERGY



[www.covenant-of-companies.ec.europa.eu](http://www.covenant-of-companies.ec.europa.eu)

#CovenantOfCompanies

An initiative  
of the

